

Georgia Milestones

Grades 3-8

Introduction

Georgia Milestones measures how well students have learned the knowledge and skills outlined in the state-adopted content standards in English language arts, mathematics, science, and social studies.

Georgia Milestones is administered primarily on the computer and includes the following features:

- Technology-enhanced items in all grades and courses,
- Open-ended (constructed response) items in English language arts in all grades and courses,
- A writing component (in response to passages read by students) at every grade level and course within the English language arts assessment,
- A reported Lexile score based on the English language arts assessment in all grades and courses, and
- Estimated norm-referenced performance ranges for all grades and courses.

ELA	Math	Science	Social Studies
Grades 3-8	Grades 3-8	Grades 5 & 8	Grade 8

Spring 2021 Testing Dates

ES:

May 11-ELA Part 1
May 12-ELA Part 2 & 3
May 13-Math Parts 1 & 2
May 18-Science Parts 1 & 2

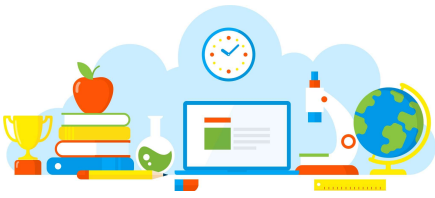
MS:

May 11-ELA Part 1
May 12-ELA Parts 2 & 3
May 13-Math-Parts 1 & 2
May 17-Science Parts 1 & 2
May 18-Social Studies Parts 1 & 2

Study/Resource Materials

<https://www.gadoe.org/Curriculum-Instruction-and-Assessment/Assessment/Pages/EOg-Study-Resource-Guides.aspx>

<https://wbte.drccdirect.com/GA/portals/ga>



Georgia Milestones

Grades 3-8

Introduction

Georgia Milestones measures how well students have learned the knowledge and skills outlined in the state-adopted content standards in English language arts, mathematics, science, and social studies.

Georgia Milestones is administered primarily on the computer and includes the following features:

- Technology-enhanced items in all grades and courses,
- Open-ended (constructed response) items in English language arts in all grades and courses,
- A writing component (in response to passages read by students) at every grade level and course within the English language arts assessment,
- A reported Lexile score based on the English language arts assessment in all grades and courses, and
- Estimated norm-referenced performance ranges for all grades and courses.

ELA	Math	Science	Social Studies
Grades 3-8	Grades 3-8	Grades 5 & 8	Grade 8

Spring 2021 Testing Dates

ES:

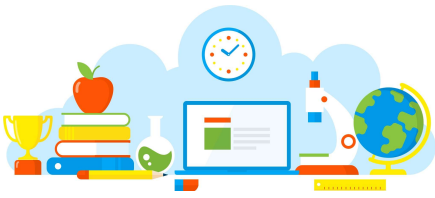
May 11-ELA Part 1
May 12-ELA Part 2 & 3
May 13-Math Parts 1 & 2
May 18-Science Parts 1 & 2

MS:

May 11-ELA Part 1
May 12-ELA Parts 2 & 3
May 13-Math-Parts 1 & 2
May 17-Science Parts 1 & 2
May 18-Social Studies Parts 1 & 2

Study/Resource Materials

<https://www.gadoe.org/Curriculum-Instruction-and-Assessment/Assessment/Pages/EOg-Study-Resource-Guides.aspx>



Georgia Milestones

Grades 3-8

<https://wbte.drcedirect.com/GA/portals/ga>